

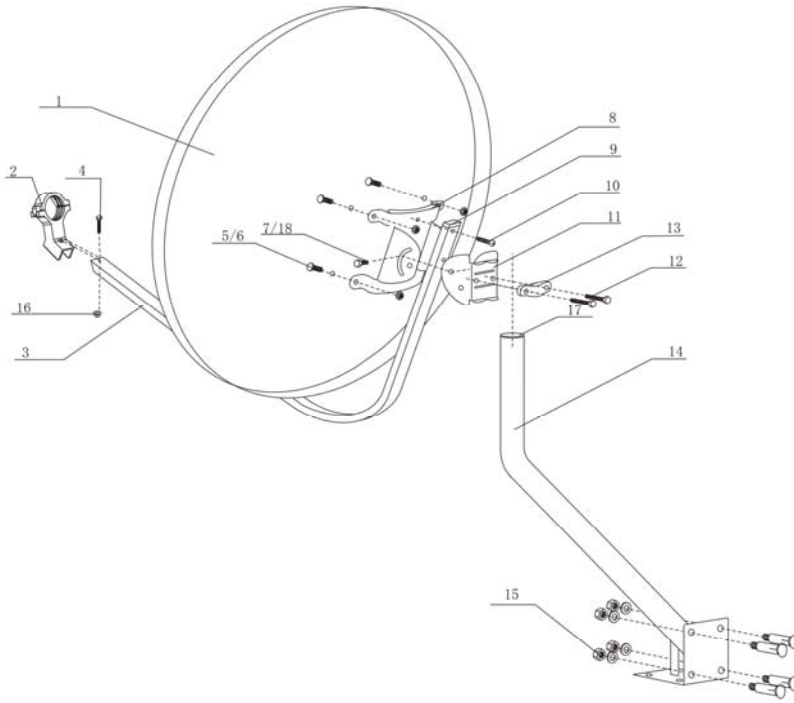


### ***SRT D60E***

#### **PARABOLIC ANTENNA SPECIFICATIONS**

<b>Type</b>	<b>Offset</b>
<b>Vertical Size</b>	<b>66cm</b>
<b>Horizontal "Diameter" Size</b>	<b>60cm</b>
<b>Reflector Thickness</b>	<b>0.5mm</b>
<b>Dish Material</b>	<b>Steel</b>
<b>Surface Treatment</b>	<b>Polyester Powder Coating</b>
<b>Focal Length</b>	<b>420mm</b>
<b>F / D Ratio</b>	<b>0.6</b>
<b>Aperture Efficiency</b>	<b>&gt;70%</b>
<b>Gain at 12.50GHz</b>	<b>36.75dBi</b>
<b>Mount Type</b>	<b>AZ / EL, Fixed</b>
<b>Stand Diameter</b>	<b>38mm</b>
<b>Elevation</b>	<b>20 – 80 Degrees</b>
<b>Azimuth</b>	<b>360 Degrees</b>
<b>Operating Temperature</b>	<b>-40°C ~ +60°C</b>
<b>Operating Wind</b>	<b>90Kph</b>
<b>Wind Load Survival</b>	<b>180Kph</b>
<b>Net Weight</b>	<b>3.65kg</b>

**STRONG**  
**SRT D60E**



NO	ITEM	DESCRIPTION	QTY
1		600 Reflector	1
2		ΦFeedhorn clip	1
3		Φ19*19 Feedhorn supporter	1
4		M6*35 Bolt	1
5		M8*16 Bolt	4
6		M8 Nut	4
7		M6*12(14) Bolt	4
8		Reflector Mount	1
9		Waterproof cover	1
10		M6*25 Bolt	2
11		Adjustive clamp	1
12		M6*60 Bolt	2
13		Pipe clamp	1
14		Φ38 Pole	1
15		M6*50 Anchor bolt	4
16		M6 Nut	1
17		Waterproog cover	1
18		6 Plain washer	4